

Chapter Contents

Page 7-1 Rapid Intervention Team (R.I.T.) Guidelines

page 7-7 Rehab Guidelines

page 7-18 Radio Frequency Use Guidelines

page 7-20 Mark-I Kit Distribution Guidelines

**THIS PAGE HAS
BEEN LEFT
BLANK
INTENTIONALLY!**



RAPID INTERVENTION TEAM (R.I.T.) GUIDELINES

I. PURPOSE

- A. Establishes guidelines and procedures for Rapid Intervention Team (RIT)
- B. In an effort to ensure the safety of its members, MABAS DIVISION 6 establishes, with this guideline, a rapid intervention program that will provide manpower on the scene for the possible rescue or assistance to its members who are lost, trapped, missing or injured. The guideline will consist of a minimum of one additional truck, squad or engine company at all working fires, building collapse, unusual incidents, etc.

II SCOPE

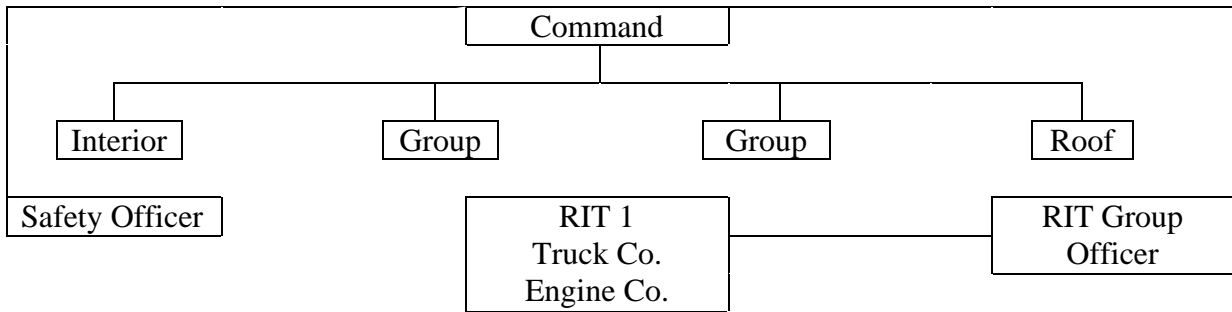
- A. During any incident, the incident commander shall have complete authority to change any part of this policy to accommodate the emergency situation as needed.
- B. The MABAS Rapid Intervention Team (R.I.T.) will provide the resources on the scene of a MABAS Box Alarm for the exclusive purpose of rapid search, and rescue of firefighters operating on the fireground.
- C. This standard shall outline the duties and responsibilities of the Incident Commander (IC), R.I.T. Group Officer, R.I.T. Company Officer, and the R.I.T. firefighters assigned as a MABAS Rapid Intervention Team (MABAS R.I.T.).
- D. Reaffirms the MABAS Mayday radio procedure for distressed, lost, missing or trapped firefighters.

III. TERMINOLOGY

- A. Mayday - The recognized term for a firefighter that is missing, trapped, lost or in distress.
Radio designation: “Mayday, Mayday, Mayday” (repeated)
- B. Mayday Response - The activation of a rapid intervention team and other pre-designated assistance, as needed, for back up and support.
- C. MABAS R.I.T. - Mutual Aid Box Alarm System Rapid Intervention Team.

- D. IC - Incident Commander (MABAS Incident Management System).
Radio designation: “*Command*”
- E. R.I.T. Group - Group Officer in command of rapid intervention operations during a Mayday Response.
Radio designation: “*RIT Group*”
- F. R.I.T. Interior - An interior group officer position for command and control of multiple rapid intervention teams, extended search and/or rescue operations, etc. The R.I.T. Interior will report to the R.I.T. Group.
Radio designation: “*RIT Interior*”
- G. R.I.T. Company Officer - The designated company officer in command of a MABAS R.I.T. The R.I.T. Company Officer will report to the R.I.T. Group or R.I.T. Interior depending on the rescue operation.
Radio designation: “*RIT 1*” (or RIT 2, 3 . . .)

IV. IMS ORGANIZATION - Example of a basic IMS organizational chart.



V. MABAS R.I.T. STAGING & SIZE-UP

- A. The Incident Commander shall designate a R.I.T. company at the box alarm level that will consist of:
 1. One (1) R.I.T. Group Officer
 2. One (1) Truck, Squad, Quint or Engine Company
 3. Additional companies (as necessary) as determined by the Incident Commander

Note: In an **extreme situation** when a MABAS R.I.T. company must be used by the IC for an urgent fireground task (e.g., rescue of civilians, attack of fast spreading fire, etc.), the **IC** shall immediately designate additional companies for R.I.T.

- B. The R.I.T. Group Officer will report directly to the IC, and inform the IC that the MABAS R.I.T. is on the scene and ready for a staging assignment position. The staging area is best determined by:

1. Size and type of the building (e.g. shopping mall, high rise, large factory)
 2. Location of the fire and heaviest concentration of firefighting.
 3. Accessibility to building entrances.
 4. Where Fire Fighting Companies entered
- C. The **R.I.T. Group Officer and R.I.T. Teams** will conduct a visual size-up of all Groups (construction features, forcible entry problems, special hazards, fire location, etc.).
- D. If the size-up of the incident necessitates the need for more than one (1) R.I.T. the IC should not delay in requesting the response of an additional companies to assign to R.I.T.
- E. The **R.I.T. Group Officer** will report and correct any extenuating fireground hazards and unsafe actions acting in the role of scene **Safety Officer**.
- F. Ensure that all members of the MABAS R.I.T. portable radio's are in the "on" position and on the primary fireground frequency.
- G. The **MABAS R.I.T.** will assemble the proper tools & equipment in a Stokes basket (if possible). The minimum tools recommended when assigned as a MABAS R.I.T. are:
1. Thermal imaging camera (T.I.C)
 2. Hand tools (axe, Haligan bar, sledge, etc)
 3. Power saws
 4. 150 feet of search rope
 5. Hydraulic door entry tool
 6. R.I.T. SCBA unit with mask
 7. 25 feet of search rope x2
 8. Four 20 feet lengths of webbing
- H. The **R.I.T. Company Officer** may assign the R.I.T. personnel positions as follows (based on available company staffing levels):
1. Position #1 – **R.I.T. Officer**: Radio, handlight, 150-foot rope bag, and TIC
 2. Position #2 – **Forcible Entry**: Radio, handlight, tools, and 25-foot rope bag.
 3. Position #3 – **SCBA**: Radio, SCBA or R.I.T. Pack.
 4. Position #4 – **Tools**: Radio, hand tools or specialty tool(s) and 25-foot rope bag.
 5. Position #5 – **Tools**: Radio, hand tools or specialty tool(s) and/or EMS equipment.
- I. The **R.I.T. Group and R.I.T. Company Officers** must determine what fireground strategic and tactical actions have been taken, firefighting progress, and the location of various suppression companies.
- J. The **R.I.T. Group and R.I.T. Company Officers** determine immediate needs (e.g., additional ground ladders, removal of barriers that could impede firefighter egress etc.) of the R.I.T. should a "Mayday" be transmitted. If you think you might need it, YOU DO!
- K. The **R.I.T. Group and R.I.T. Company Officers** must pre-plan alternate rescue plans that might involve multiple R.I.T. entrances, wall breaches, ladder access, and various search operations.

VI. MABAS R.I.T. DEPLOYMENT

- A. The **Incident Commander (IC)** will request a “**Mayday Response**” of the assigned R.I.T. company. IC may enact any or all of the following “Mayday Response” procedures:
1. The Incident Commander will switch all fireground companies and chief officers to an alternate radio channel (e.g., From IFERN fire ground to IFERN main channel).
 2. Escalation to the next alarm (1st Alarm to 2nd Alarm).
 3. Activate an EMS Box alarm.
 4. Dispatch MABAS Division 6 Technical Rescue Teams.
 5. Send R.I.T. 2 BACK UP from staging to the R.I.T. Group Officer; one (1) truck or squad and one (1) engine from staging.
 6. Designate R.I.T 3 in staging and place on stand by.
 7. Incident Commander to conduct a Personnel Accountability Report (P.A.R.) or roll call of all companies operating on the fireground.
- B. The **IC** must try to determine the nature of the “Mayday” (lost, trapped, missing, and/or in distress) and any other information that will assist the R.I.T. (e.g., location in the building, number of firefighters involved in the “Mayday”, fire conditions, etc.).
- C. The **IC** will order the deployment of the MABAS R.I.T. upon transmission of a “Mayday” or upon information that a firefighter(s) are lost, trapped, missing, and/or in distress.
- D. The **R.I.T. Group Officer** must assign the R.I.T. Company Officer and meet face-to-face to explain the situation at hand, the location, number of firefighters involved, plan-of-action to be taken, etc.
- E. Once deployed, the **R.I.T. Company Officer shall be the first in, and last out**, unless extreme circumstances will not permit (e.g., confined spaces, low SCBA air supply or fatigue).
- F. Once deployed, the **R.I.T. Company Officer** must notify the assigned R.I.T. Group Officer of the following:
1. Conditions encountered (smoke, heat, fire, structural stability, etc..)
 2. When you have located the lost, trapped, and/or missing firefighter.
 3. When you start to remove the firefighter and time it is going to take.
 4. When you are removing the firefighter to (Group B, Group 4, the second floor window, etc.)
 5. The need for any additional or special equipment
 6. The need for an additional R.I.T. company to deploy.
 7. Any additional information that could assist in the rescue of the lost, trapped or missing firefighter.
- G. The **R.I.T. Group Officer** must **monitor the primary fireground channel** and inform the R.I.T. **every 5 minutes** once deployed for air consumption levels, and/or fireground updates. After 10 minutes R.I.T. Group officer must pull out R.I.T. 1 one and deploy R.I.T. 2

- H. The **R.I.T. Group** must relay fireground progress reports from the IC with regard to the operation and success of the R.I.T.
- I. In the event additional command and control is needed inside the building (e.g., poor communications, collapse, extrication, multiple R.I.T. s) the **R.I.T. Group Officer** will assign a **R.I.T. Interior Group Officer**.
- J. The **R.I.T. Group Officer** will be directly responsible for the accountability of the R.I.T. at all times. The R.I.T. Group Officer will account for the members and companies assigned to the rapid intervention teams with the use of the Passport Accountability System as follows:
 - 1. Example:
R.I.T. 1 (consist of) DKLB SQ 1 and DKLB ENG 4 (6 man team)
 - 2. When assigned as the MABAS R.I.T. the radio signature from the R.I.T. Company Officer shall be, **“RIT 1”**.
 - 3. When multiple MABAS R.I.T.(s) are assigned, the radio signature from the additional R.I.T. Company Officers shall be, **“RIT 2, RIT 3, RIT 4”** etc.
 - 4. Once your RIT Company exits the building, incident, hot zone, etc., immediately conduct a roll call and report the results of that to the RIT Group officer. Have your RIT team change their SCBA air bottles and regroup for deployment again if necessary.

VII. COMMUNICATIONS AND RADIO PROCEDURES

- A. When a “Mayday” is transmitted the IC may order all companies **not involved** in the “Mayday” to switch to the alternate fireground frequency. **Only the officer and members** of the company that transmitted the “Mayday” and R.I.T.(s) will remain on the primary radio channel. The primary frequency will then be open and dedicated to the search and rescue efforts, and allow the victims to transmit vital information such as their location, identity, number of victims, their condition, etc.
- B. It is imperative that radio discipline is practiced at all times and especially during a “Mayday” incident. **(Stop all unnecessary radio traffic at once.)**

VIII. RESTRICTIONS

- A. The R.I.T. should **not** be used for routine firefighting or relief purposes.
- B. The R.I.T. should **not** be rotated by the IC with other companies. It is important for the RIT to maintain a consistent watch of the fire ground operations, a constant structural size-up, and a constant state of preparedness throughout the incident.
- C. In **extreme** circumstances (rescue of civilians, attack of fast spreading fire, etc.) the IC can use the R.I.T. Company for rescue or firefighting task other than R.I.T operations. The IC shall immediately request an additional R.I.T. company.

**THIS PAGE HAS
BEEN LEFT
BLANK
INTENTIONALLY!**



M.A.B.A.S. DIVISION XIII

Standard Operating Guidelines

REHAB GUIDELINES

- I. **PURPOSE** - To ensure that the physical and mental condition of Fire and EMS personnel operating at the scene of an emergency or a training exercise does not deteriorate to a point that affects the safety of each worker or that jeopardizes the safety and integrity of the operation.
- II. **SCOPE** - This procedure shall apply to all emergency operations and training exercises where strenuous physical activity or exposures to heat or cold exist.
- III. **RESPONSIBILITIES**
 - A. **Incident Commander** - The Incident Commander shall consider the circumstances of each incident and make adequate provisions early in the incident for the rest and rehabilitation for all members operating at the scene. These provisions shall include; medical evaluation, treatment and monitoring, food and fluid replenishment, mental rest, and relief from extreme climatic conditions and the other environmental parameters of the incident. The rehabilitation shall include the provision of Emergency Medical Services (EMS) at the Advanced Life Support (ALS) level. Recycling of units. Company recycling of units on the fire incident shall be accomplished following a prolonged on scene period. Incident Commanders shall return to quarters those units that have been involved in prolonged physical and mental stress. Replacement of those units shall be the responsibility of Incident Command.
 - B. **Supervisors** - All supervisors shall maintain an awareness of the condition of each member operating within their span of control and ensure that adequate steps are taken to provide for each member's safety and health. The command structure shall be utilized to request relief and the reassignment of fatigued crews.
 - C. **Personnel** - During periods of hot weather, members shall be encouraged to drink water and activity beverages throughout the workday. During any emergency incident or training evolution, all members shall advise their supervisor when they believe that their level of fatigue or exposure to heat or cold is approaching a level that could affect themselves, their crew, or the operation in

which they are involved. Members shall also remain aware of the health and safety of other members of their crew.

IV. ESTABLISHMENT OF REHABILITATION GROUP

- The
- A. Responsibility - The Incident Commander will establish a Rehabilitation Group or Group when conditions indicate that rest and rehabilitation is needed for personnel operating at an incident scene or training evolution. EMS will be placed in charge of the Group group and shall be known as the Rehab Officer. Rehab Officer will typically report to the Incident Commander or Logistics Officer in the framework of the incident management system.
- B. Location - The Incident Commander will normally designate the location for the Rehabilitation Area. If a specific location has not been designated, the Rehab Officer shall select an appropriate location based on the site characteristics and designations below:
1. *Site Characteristics*
 - a. It should be in a location that will provide physical rest by allowing the body to recuperate from the demands and hazards of the emergency operation or training evolution.
 - b. It should be far enough away from the scene that members may safely remove their turnout gear and SCBA and be afforded mental rest from the stress and pressure of the emergency operation or training evolution.
 - c. It should provide suitable protection from the prevailing environmental conditions. During hot weather, it should be in a cool, shaded area. During cold weather, it should be in a warm, dry area.
 - d. It should enable members to be free of exhaust fumes from apparatus, vehicles, or equipment (including those involved in the Rehab Group/Group operations).
 - e. It should be large enough to accommodate multiple crews, based on the size of the incident.
 - f. It should be easily accessible by EMS units.
 - g. It should allow prompt re-entry into the emergency operation upon complete recuperation.
 2. *Site Location Considerations*
 - a. An area should be designated for ambulances or other emergency vehicles at the scene or called to the scene.
 - b. An open area in which a Rehab Area can be created using tarps, fans, fluids, etc.
 - c. A nearby garage, building lobby, or other structure.
 - d. American Red Cross or Salvation Army.
 - e. A school bus or other municipal bus.
 - f. Rehab may be located several floors below a fire in a high-rise building.

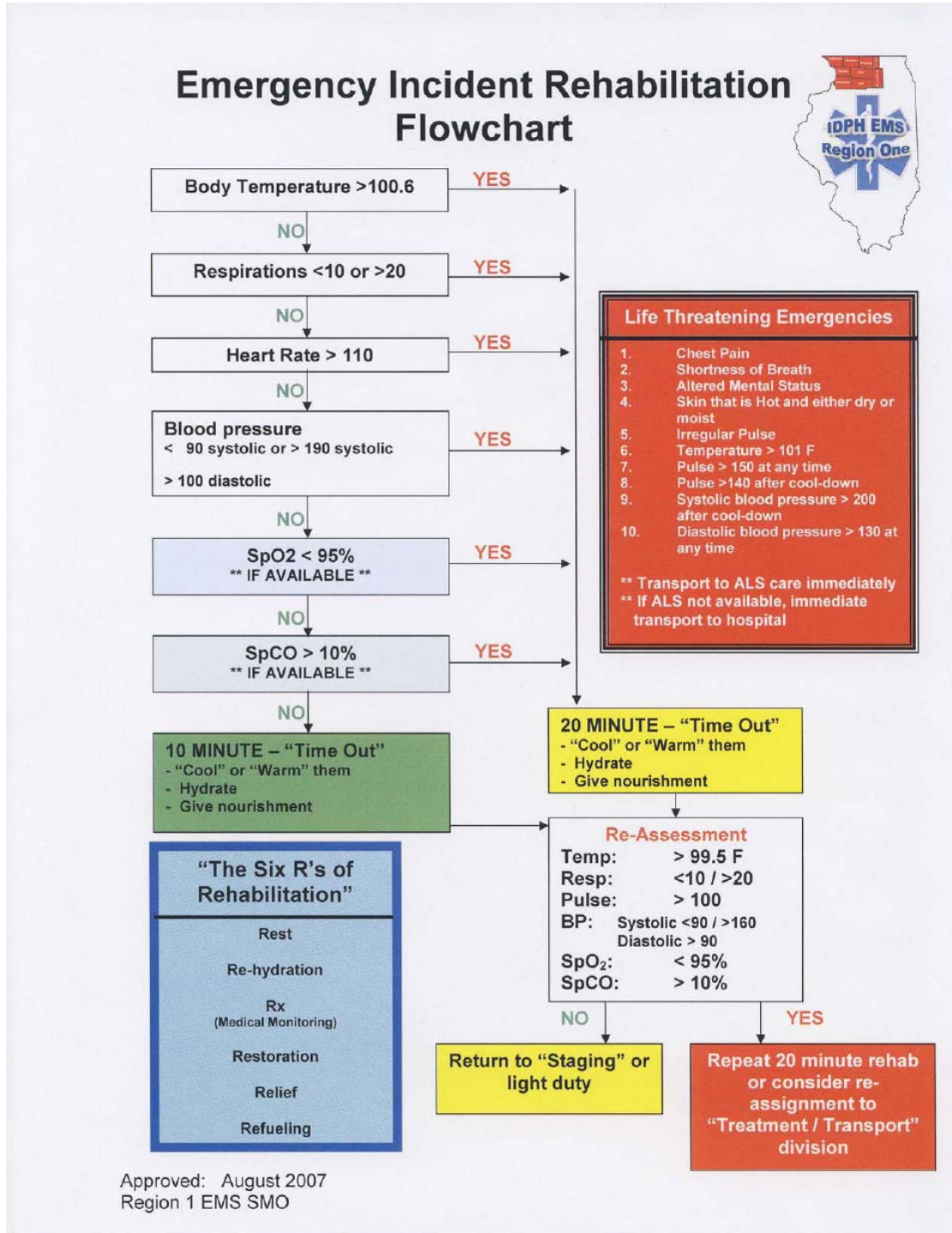
- C. Resources - The Rehab Officer shall secure all necessary resources required to adequately staff and supply the Rehab Area. The supplies should include the items listed below:
1. Fluids - water, wet towels, activity beverage, oral electrolyte solutions and ice.
 2. Food
 3. Soup, broth, or stew in hot / cold cups.
 4. Extended incident: fruit, sandwiches, and warm decaffeinated drinks.
 5. Medical - blood pressure cuffs, stethoscopes, oxygen administration devices, cardiac monitors, intravenous solutions and thermometers.
 6. Other - awnings, fans, tarps, smoke ejectors, heaters, dry clothing extra equipment, floodlights, blankets and towels, Porta-potties, traffic cones and fire line tape (to identify the entrance and exit of the Rehabilitation Area).
 7. Personnel - is made up of the ambulance crew responding to the fire or related incident. EMS responders from the related fire department. A second EMS unit is dispatched to assist the first unit usually as needed for the multiple MABAS level alarm.

V. **REHAB GUIDELINES**

- A. Rehab Group/Group Establishment
1. Rehabilitation should be considered by staff officers during the initial planning stages of an emergency response. However, the climatic or environmental conditions of the emergency scene should not be the sole justification for establishing a Rehabilitation Area. Any activity / incident that is large in size, long in duration, and / or labor intensive will rapidly deplete the energy and strength of personnel and therefore merits consideration for rehabilitation.
 2. Climatic or environmental conditions that indicate the need to establish a Rehabilitation Area are a heat stress index above 90 F (see Table 1-1) or wind-chill index below 10 F (see Table 1-2).
- B. Hydration - A critical factor in the prevention of heat injury is the maintenance of water and electrolytes. Water must be replaced during exercise periods and at emergency incidents. During heat stress, the member should consume at least one quart of water per hour. This should be accomplished first, and followed with a re-hydration solution of a 50/50 mixture of water and a commercially prepared activity beverage during extended incidents and administered at about 40 degrees. Re-hydration is important even during cold weather operations where, despite the outside temperature, heat stress may occur during firefighting or other strenuous activity when protective equipment is worn. Alcohol and caffeine beverages should be avoided before and during heat stress because both interfere with the body's water conservation mechanisms. Carbonated beverages should also be avoided.

- C. Nourishment - The department shall provide food at the scene of an extended incident when units are engaged for two or more hours. A cup of soup, broth, or stew is highly recommended because it is digested much faster than sandwiches and fast food products. In addition, foods such as apples, oranges, and bananas provide supplemental forms of energy replacement. Fatty and/or salty foods should be avoided. During the third and fourth hour, sandwiches are appropriate due to carbohydrate loss.
- D. Rest - The "two air bottle rule," or 45 minutes of work time, is recommended as an acceptable level prior to the mandatory first rehabilitation period. Members shall re-hydrate (at least eight ounces) while SCBA cylinders are being changed. Firefighters having worked for two full 30 minute rated bottles, or 45 minutes, shall be immediately placed in the Rehab Group/Group for rest and evaluation. In all cases, the objective evaluation of a member's fatigue level shall be the criteria for rehab time. Rest shall not be less than ten minutes and may exceed an hour as determined by the Rehab Officer. Fresh crews, or crews released from the Rehab Group/Group, shall be available in the Staging Area to ensure that fatigued members are not required to return to duty before they are rested, evaluated, and released by the Rehab Officer.
- E. Recycling Of On-Scene Companies - Company recycling of units on the fire incident shall be accomplished following a prolonged on-scene period. Incident Commanders shall return to quarters those units that have been involved in prolonged physical and mental stress. Replacement of those units shall be the responsibility of Incident Command.
- F. Recovery - Members in the Rehabilitation Area should maintain a high level of hydration. Members are not to be moved from a hot environment directly into an air-conditioned area because the body's cooling system can shut down in response to the external cooling. An air-conditioned environment is acceptable after a cool-down period at ambient temperature with sufficient air movement. Certain drugs impair the body's ability to sweat and extreme caution must be exercised if the member has taken antihistamines, such as Actifed or Benadryl, or has taken diuretics or stimulants.
- G. Medical Evaluations
1. *Emergency Medical Services (EMS)* - EMS should be provided and staffed by the most highly trained and qualified EMS personnel on the scene (at an ALS level). They shall evaluate vital signs, examine members, and make proper disposition (return to duty, continued rehabilitation, or medical treatment and transport to medical facility). Continued rehabilitation should consist of additional monitoring of vital signs, providing rest, and providing fluids for re-hydration. ***Medical treatment for members, whose signs and/or symptoms indicate potential problems, should be provided in accordance with local medical control***

standard operating procedures. Medical evaluations should be done in accordance with the IDPH Region 1 Standing Medical Order for Emergency Incident Rehabilitation. EMS personnel shall be assertive in an effort to find potential medical problems early.



- H. Accountability - Members assigned to the Rehab Group/Group shall enter and exit the Rehab Area as a crew. The crew designation, number of crew members, and the times of entry to and exit from the Rehab Area shall be documented by the Rehab Officer or his/her designee on the Company Check-In/Out Sheet. Crews shall not leave the Rehab Area until authorized to do so by the Rehab Officer.

DRAFT

HEAT STRESS INDEX

TEMPERATURE °F	RELATIVE HUMIDITY								
	10%	20%	30%	40%	50%	60%	70%	80%	90%
104	98	104	110	120	132				
102	97	101	108	117	125				
100	95	99	105	110	120	132			
98	93	97	101	106	110	125			
96	91	95	98	104	108	120	128		
94	89	93	95	100	105	111	122		
92	87	90	92	96	100	106	115	122	
90	85	88	90	92	96	100	106	114	122
88	82	86	87	89	93	95	100	106	115
86	80	84	85	87	90	92	96	100	109
84	78	81	83	85	86	89	91	95	99
82	77	79	80	81	84	86	89	91	95
80	75	77	78	79	81	83	85	86	89
78	72	75	77	78	79	80	81	83	85
76	70	72	75	76	77	77	77	78	79
74	68	70	73	74	75	75	75	76	77

Note: Add 10 °F when protective clothing is worn and add 10 °F when in direct sunlight

HUMITURE °F	DANGER CATEGORY	INJURY THREAT
BELOW 60°	NONE	LITTLE OR NO DANGER UNDER NORMAL CIRCUMSTANCES
80° - 90°	CAUTION	FATIGUE POSSIBLE IF EXPOSURE IS PROLONGED AND THERE IS PHYSICAL ACTIVITY
90° - 105°	EXTREME CAUTION	HEAT CRAMPS AND HEAT EXHAUSTION POSSIBLE IF EXPOSURE IS PROLONGED AND THERE IS PHYSICAL ACTIVITY
105° - 130°	DANGER	HEAT CRAMPS OR EXHAUSTION LIKELY, HEAT STROKE POSSIBLE IF EXPOSURE IS PROLONGED AND THERE IS PHYSICAL ACTIVITY
ABOVE 130°	EXTREME DANAGER	HEAT STROKE IMMINENT!

Table 1-1

WIND CHILL INDEX

WIND SPEED (MPH)	TEMPERATURE °F												
	45	40	35	30	25	20	15	10	5	0	-5	-10	-15
5	43	37	32	27	22	16	11	6	0	-5	-10	-15	-21
10	34	28	22	16	10	3	3	-9	-15	-22	-27	-34	-40
15	29	23	16	9	2	-5	-11	-18	-25	-31	-38	-45	-51
20	26	19	12	4	-3	-10	-17	-24	-31	-39	-46	-53	-60
25	23	16	8	1	-7	-15	-22	-29	-36	-44	-51	-59	-66
30	21	13	6	-2	-10	-18	-25	-33	-41	-49	-56	-64	-71
35	20	12	4	-4	-12	-20	-27	-35	-43	-52	-58	-67	-75
40	19	11	3	-5	-13	-21	-29	-37	-45	-53	-60	-69	-76
45	18	10	2	-6	-14	-22	-30	-38	-46	-54	-62	-70	-78

A B C

WIND CHILL TEMPERATURE °F		DANGER
A	ABOVE 25°F	LITTLE DANGER FOR PROPERLY CLOTHED PERSON
B	25°F / 75 °F	INCREASING DANGER, FLESH MAY FREEZE
C	BELOW 75°F	GREAT DANGER, FLESH MAY FREEZE IN 30 SECONDS

Table 1-2

REHAB GROUP *EVENT SCHEDULE/TIMELINE*

FIRST 15 MINUTES

1. Check Homeowners
2. EMS Setup P.I.D. and Rehab Group / Area
3. EMS Assist with Scene Fire Attack Setup / Water Supply Setup

FIRST HOUR

1. Setup Rehab Group
2. Provides Water From Rehab Resources Or Rehab Kit In Ambulance And Wet Towels On High Temperature Days
3. Take Vital Signs and Record On Emergency Incident Rehab Report
4. Expect Personnel At 45 min. or After 2nd SCBA Bottle

SECOND HOUR

1. Provide 20oz. of Water, or Combination of Water then Gatorade
2. Continue Vital Signs And Record on Emergency Incident Rehab Report
3. Start Call For:
1st American Red Cross
2nd Salvation Army Canteen
4. Provide Cup-Of-Soup, Fresh Fruit

THIRD HOUR

1. Canteen Setup
2. Continue Vital Signs and Record on Emergency Incident Rehab Report
3. Sandwiches Available (Canteen 1st, Alternative Food Sources 2nd)

REHAB GROUP COMPANY CHECK-IN/CHECK-OUT LOG

Companies Operating On The Scene: (ex. E106, S907, 1506, T-10, Bat. 1, etc.)			

YOU MUST TRACK ALL COMPANIES THAT ARE COMING INTO/OUT OF THE REHAB GROUP.

Allow approximately 15 minutes per company to complete their Rehab assignment. Once each company has completed their Rehab, return the company to Incident Command. Attempt to keep the company together and intact. Notify Incident Command when time remaining in Rehab is at approximately 5 minutes for each of the companies. Give completed Check-In/Check-Out Log to Incident Command upon incident completion.

Company #	# Crew Members	Time In	Time Out	Company #	# Crew Members	Time In	Time Out
<i>Incident #</i>		<i>Date of Incident</i>		<i>Rehab Officer Signature</i>			

EMERGENCY INCIDENT REHABILITATION REPORT

IDPH Region 1 EMS - MABAS Divisions

INCIDENT: _____
 DATE: ___/___/___ TIME START: _____ END: _____
 EIR Division Officer: _____
 EIR Area Name: _____

TIMES	NAME / AGENCY	TEMP	RESP	PULSE	B/P	SpO ₂	SpCO	COMMENTS / CONCERNS	TRANSFERRED TO TREATMENT DIVISION
IN					/				
					/				
OUT					/				
IN					/				
					/				
OUT					/				
IN					/				
					/				
OUT					/				
IN					/				
					/				
OUT					/				
IN					/				
					/				
OUT					/				

Medical Monitoring References: Acceptable Values (< - less than // > - greater than)

Body Temperature < 100.6 Heart Rate < 110 Blood Pressure: **INITIAL** **Re-Assessment**
 Respirations 10 to 20 SpO₂ > 95 / SpCO < 10 Sys: >90 & <190 Sys: <90 / >160
 Dias: <100 Dias: <90



RADIO FREQUENCY USE GUIDELINES

I. **PURPOSE** - Interoperability between various fire departments and other public safety and government agencies at major emergencies or disasters is essential for organized and safe coordination of personnel and services.

II. **RADIO FREQUENCIES**

A. In addition to your primary dispatch frequency, the following radio frequencies are required for fire service and public safety interoperability by Division XIII:

<i>Frequency</i>	<i>Name</i>	<i>Purpose</i>
154.265 MHz	IFERN ¹	Primary MABAS Mutual Aid Dispatch
153.830 MHz	Red Fireground	Fireground Operations channel
154.280 MHz	White Fireground	Fireground Operations channel
154.295 MHz	Blue Fireground	Fireground Operations channel
155.055 MHz	IREACH	Interdisciplinary Coordination

B. The following frequencies are not currently available. However, they may be added in the future as the MABAS organization, including Division XIII grows:

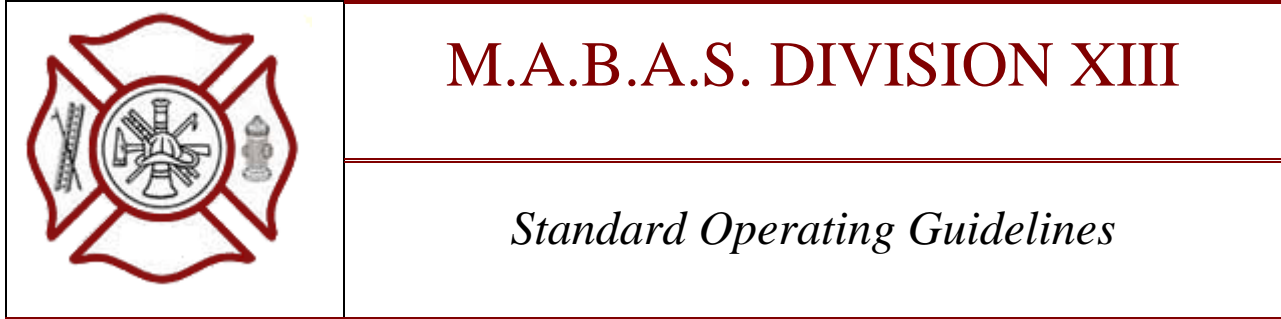
<i>Frequency</i>	<i>Name</i>	<i>Purpose</i>
154.3025 MHz	IFERN ²	Alternate MABAS Mutual Aid Dispatch
154.8375 MHz	Gold Fireground	Fireground Operations channel
154.2725 MHz	Black Fireground	Fireground Operations channel
154.2875 MHz	Grey Fireground	Fireground Operations channel

III. **RADIO TRANSMIT POWER LIMITATIONS**

- A. Low power fireground transmissions will facilitate the reuse of fireground frequencies at multiple incidents without interference.
- B. It is therefore recommended that operations on fireground frequencies should be limited to ten (10) watts maximum output.

IV. **HELICOPTER COMMUNICATIONS**

- A. The use of the primary IFERN Dispatch frequency, along with either the Red or White Fireground frequencies for medical evacuation helicopter landing zones or communications is an inappropriate use of the frequency and is strongly discouraged. The use of existing VHF-MERCI or IREACH frequencies is more appropriate for landing zone or for ambulance to helicopter communications.
- B. Departments will use MERCI 340 as their primary ambulance to hospital frequency. MERCI 340 will be used for communications with medical helicopters.
- C. Departments without EMS responsibilities, or departments where use of existing VHF-MERCI frequencies are undesirable for helicopter use, IREACH should be the frequency of choice for landing zone communications.



MARK-I KIT DISTRIBUTION GUIDELINES

I. PURPOSE - To establish guidelines and procedures for the distribution of the MARK-I Kits to Member Departments of Division 6 in the event of a chemical exposure.

II. MARK-I KIT CACHES

- A. The Mark-I Kits allocated to Division 6 will be housed at DeKalb Fire Department, Station #3, 950 W. Dresser Road, DeKalb.
- B. These two (2) departments will provide 24-hour access to the Mark-I Kits and provide for an immediate emergency response to the scene of an incident if requested.
- C. It must be understood that in the event of a large scale exposure, the Mark-I Kits allocated to Division 6 may be moved and used anywhere in the State of Illinois if so directed by the Illinois Emergency Management Agency (IEMA).

III. NOTIFICATION

- A. The incident commander (I/C) or senior officer on the scene of a given event must make the decision early in the incident as to when a chemical exposure has been encountered and make proper notification to request the Mark-I Kits. While the kits have been strategically located within the Division, decisions must be made quickly in order to mobilize the kits to the scene in a timely manner.
- B. The I/C must determine the number of Mark-I Kits being requested for mobilization. The number of kits needed depends not only on the number of personnel exposed, but also by the severity of the exposure.
 - 1. **Mild Exposure** – requires administration of one (1) Mark-I Kit
 - 2. **Moderate Exposure** – administration of two (2) Mark-I Kits
 - 3. **Severe Exposure** – administration of three (3) Mark-I Kits
- C. The I/C should contact either:
 - 1. DeKalb County Sheriff Office MABAS Division 6 – for notification of the DeKalb Fire Department kits
 - 2. Departments not using DeKalb County Sheriff Officer as their primary dispatch center should have their dispatch notify DeKalb County Sheriff

Office MABAS Division 6 with the request for the kits and the number of kits needed.

- D. The location the kits are to be delivered to, along with the number of kits needed, should also be included in the request to DeKalb County Sheriff Officer MABAS Division 6.
- E. Upon proper notification, the DeKalb Fire Department will deliver the kits to the incident scene, or other location as directed by the I/C. The kits will be delivered to the command post to be turned over to the EMS personnel in charge of patient care on the scene.

III. MARK-I KIT REPLACEMENT

- A. Departments that utilize the Mark-I Kits provided by Division 6 during an incident shall have the responsibility of replenishing the DeKalb Fire Department cache with the number of kits used.
- B. The kits should be replaced as soon as possible after the termination of the event.
- C. Any unused kits will be returned to their appropriate storage location at DeKalb Fire Department, Station #3.